



HOME COMFORT  
HOTEL LUXURY

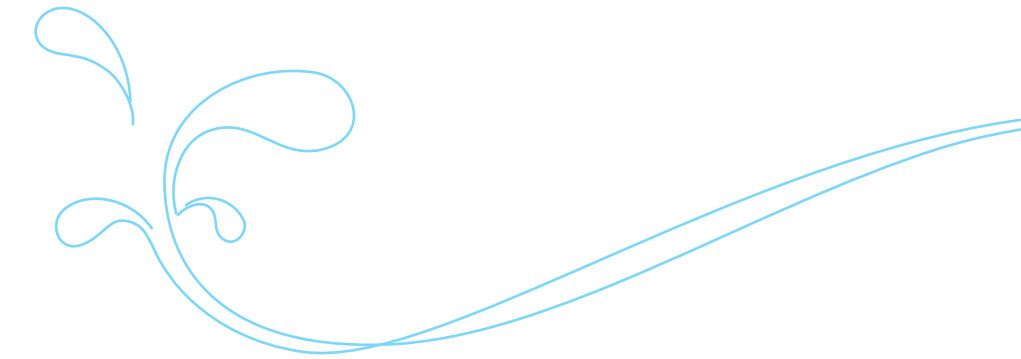
---



## Kent Baywatch Suites

is similar to a luxury service apartment project. Located in Edakochi, Kent Baywatch Suites overlooks the elegant Vembanad backwaters. A lavish yet affordable choice for the business and leisure class including families and groups for short and long-term stays. Set in a serene location, with a unique natural backdrop Kent

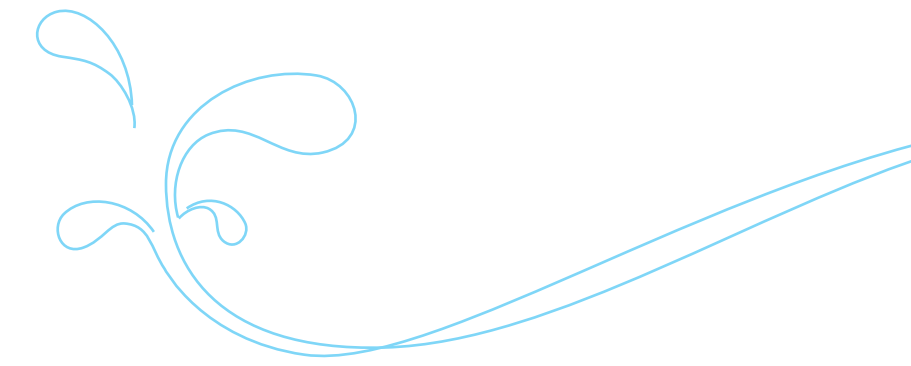
Baywatch Suites is the perfect spot to indulge and enjoy exotic waterfront luxury. Situated just 15 minutes away from Vytilla, Baywatch Suites offers a place where people can easily connect with nature. The location is within close proximity to city's major destinations, shopping and entertainment centres, hospitals, hotels, transportation hubs and places with religious importance.



## INVESTMENT CUM WATERFRONT HOLIDAY HOME

Kent Baywatch Suites provides you viable rental income throughout your life. Live there or rent out for days, weeks or months. Welcome your guests or friends and celebrate your weekends or holidays with absolute thrill at the perfect waterfront holiday home. An opportunity to explore endless opportunities near Lake Vembanad!





## INVESTMENT SPECIALITIES

- Every resident has the freedom to give their apartment for rent anytime they wish to.
- Daily, weekly, monthly and yearly rental options are available.
- The apartment complex will be run by the Owner's Association.
- The revenue generated from the apartment complex will be shared amongst the investors.
- Rental apartments are brought together into a common pool.
- Every investor can track the daily/monthly/yearly occupancy status and revenue online.

Everything from finding the proper tenants, timely payments, to the complete up-to-date maintenance of the apartment and rent collection will be managed by the in-house staff. And anytime you wish to reside back, your home will always remain cosy and spotless to welcome you.



## ON THE VERGE OF THRILL

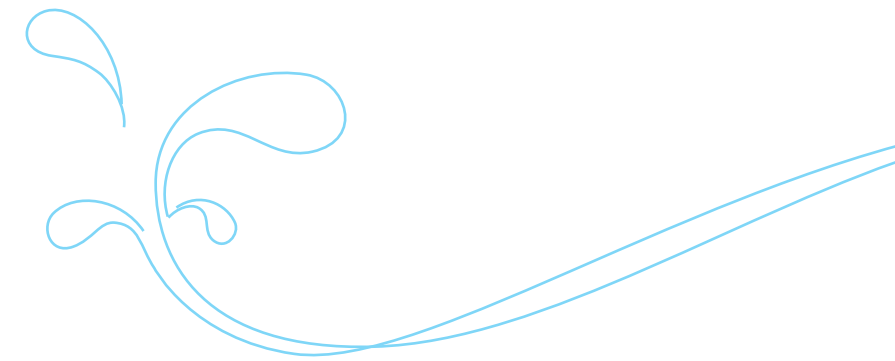
As a privileged owner of an apartment, you will enjoy access to an exclusive speedboat\*, provided by Kent. Also, Kent Baywatch Suites brings endless possibilities to all realms of other water recreation - swimming, boating, fishing, backwater cruising and other water sports. The boat jetty is not only for the curious sailors. The aim is to provide a boating environment for the residents. The easily accessible boat jetty can also be used for fishing, relaxation, private boat parking or moorings.



\* Speedboat (6 Seater)





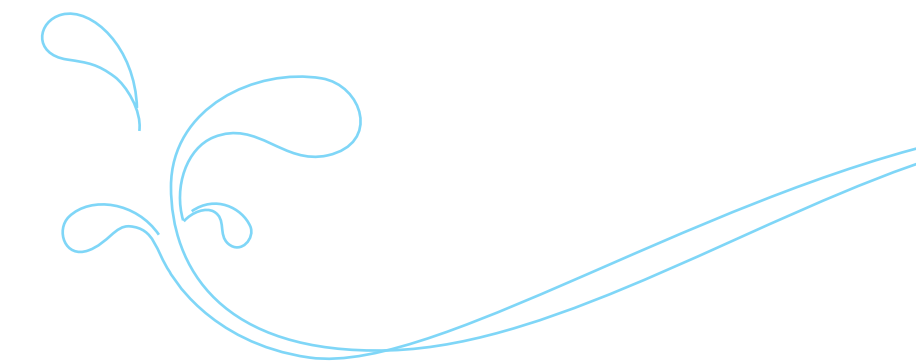
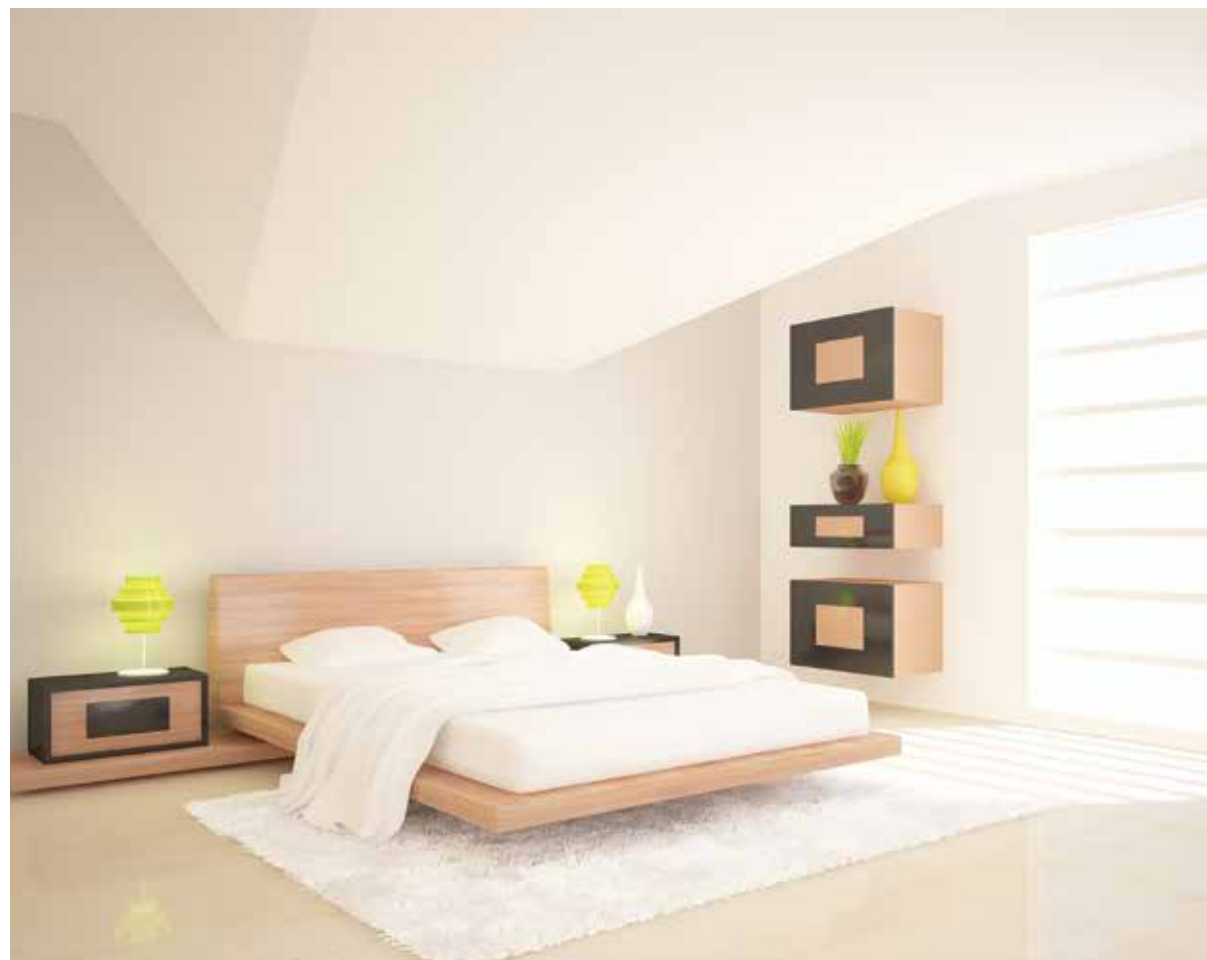


## INFINITE HAPPINESS

Equipped with posh amenities, the infinity pool offers perfect connection with the lush environment. A waterfront masterpiece to enjoy and relax with family and friends. A perfect mix of luxury, and beauty against the backdrop of the magnificent backwaters.







## SPACE LUXURY PRIVACY

Kent Baywatch Suites provides each individual, breathtaking views and a private backwater retreat. Relax in your luxurious living room, cook your own delicious meals, and a plenty of other options to make your moments unforgettable. All apartments offer stunning water view which is perhaps the most unique feature of Kent Baywatch Suites.





## MODERN AMENITIES

Kent Baywatch Suites has an array of luxurious choices to pamper guests during their stay. It offers everything from modern amenities to outstanding services. With uncompromising care and courtesy, this luxury apartment in the heart of Edakochi is in for a captivating experience.



## LIFESTYLE AMENITIES

- Grand lobby
- Multipurpose clubhouse
- Mini restaurant
- Barbeque counter
- Swimming pool
- Separate shower area for ladies and gents
- Landscaped garden
- Children's play area
- Modern lifts
- Health club
- Sauna
- Jacuzzi
- Steam bath
- Intercom
- Surveillance system
- Security cabin
- Internal road with paving tiles
- Boat jetty and boat \*\*
- Chinese fishing nets \*\*

\*\* Subject to Approval



GROUND FLOOR PLAN



SQ FT: **GA** 802, **GB** 787, **GC** 768, **GD** 835, **GE** 835, **GF** 768, **GG** 787, **GH** 802



# TYPICAL FLOOR PLAN (1<sup>ST</sup> TO 8<sup>TH</sup>)



SQ FT: **B1** 806, **B2** 743, **B3** 882, **B4** 860, **B5** 846, **B6** 846, **B7** 860, **B8** 882, **B9** 743, **B10** 806  
**A1** 1422, **A2** 1422









**Kent** Constructions Pvt. Ltd.

Door No: 63/3441 -A166, Kent Hail Garden, First Floor, Stadium Link Road,  
Near Jawaharlal Nehru International Stadium, Palarivattom,  
Cochin - 682 025, Kerala, India.

Ph: +91 484 3022222

E-mail: [sales@kenthomes.in](mailto:sales@kenthomes.in) [www.kenthomes.in](http://www.kenthomes.in)

Call: 99462 55555

This brochure is purely conceptual and not a legal offering. The developer reserves the right to add, delete, alter and detail, specification, elevation mentioned herein. The brochure is indicative of how the furniture can be arranged in the residential unit. No furniture is supplied to the purchaser unless otherwise mentioned. All images unless otherwise specified is for illustration purpose only.